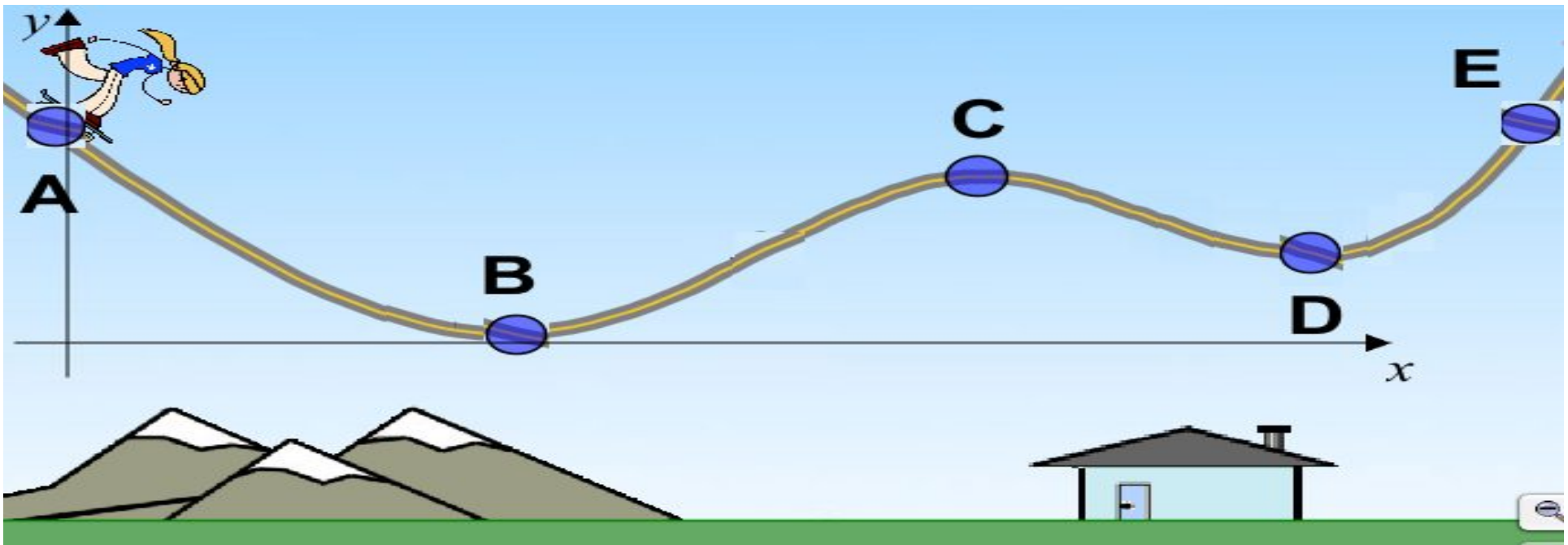




Skateboarder on a track (PE curve).

What's the direction of the horizontal force she feels when she is at point A?  
(1D gradient)

1. Left      2. Right      3. None





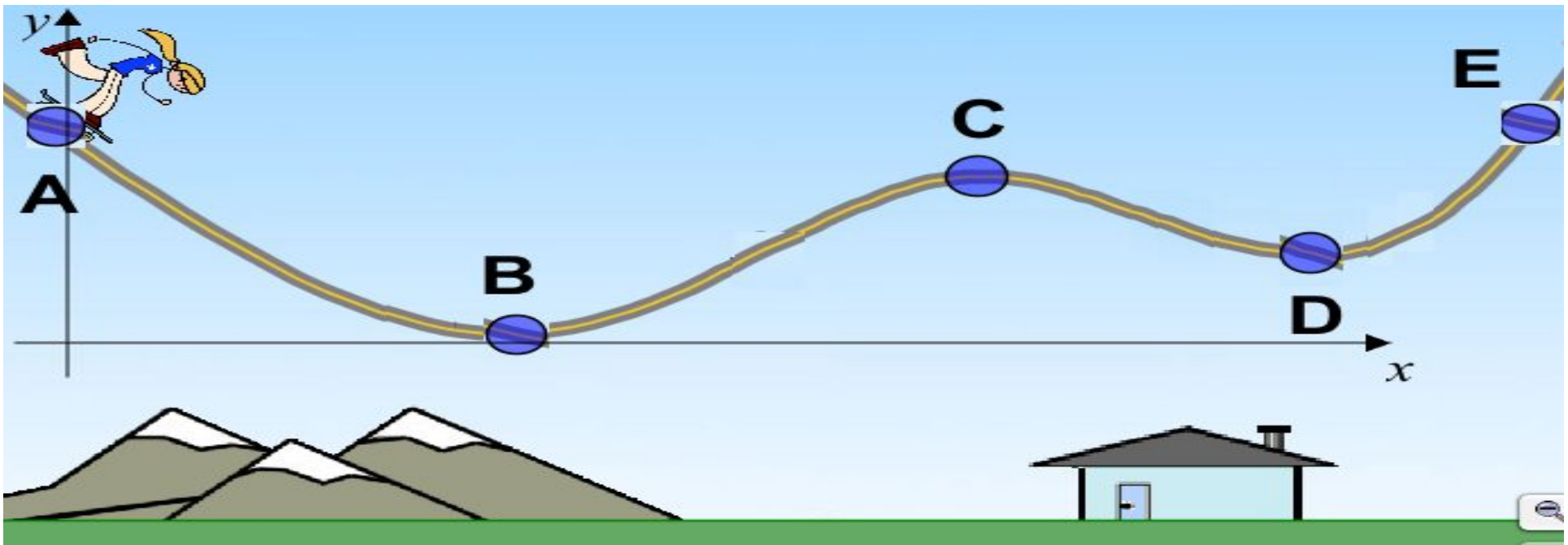
Skateboarder on a track (PE curve).

What's the direction of the horizontal force she feels when she is at point B?  
(1D gradient)

1. Left

2. Right

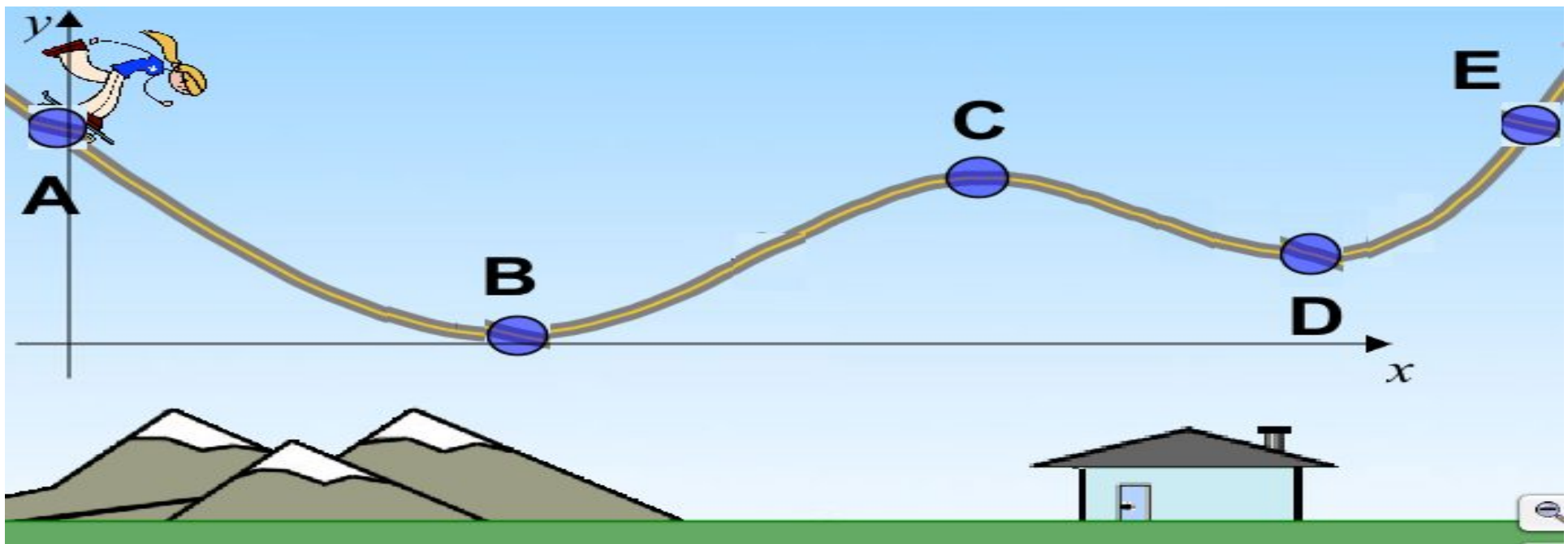
3. None





Skateboarder on a track (PE curve).  
What's the direction of the horizontal  
force she feels when she is at point E?  
(1D gradient)

1. Left      2. Right      3. None

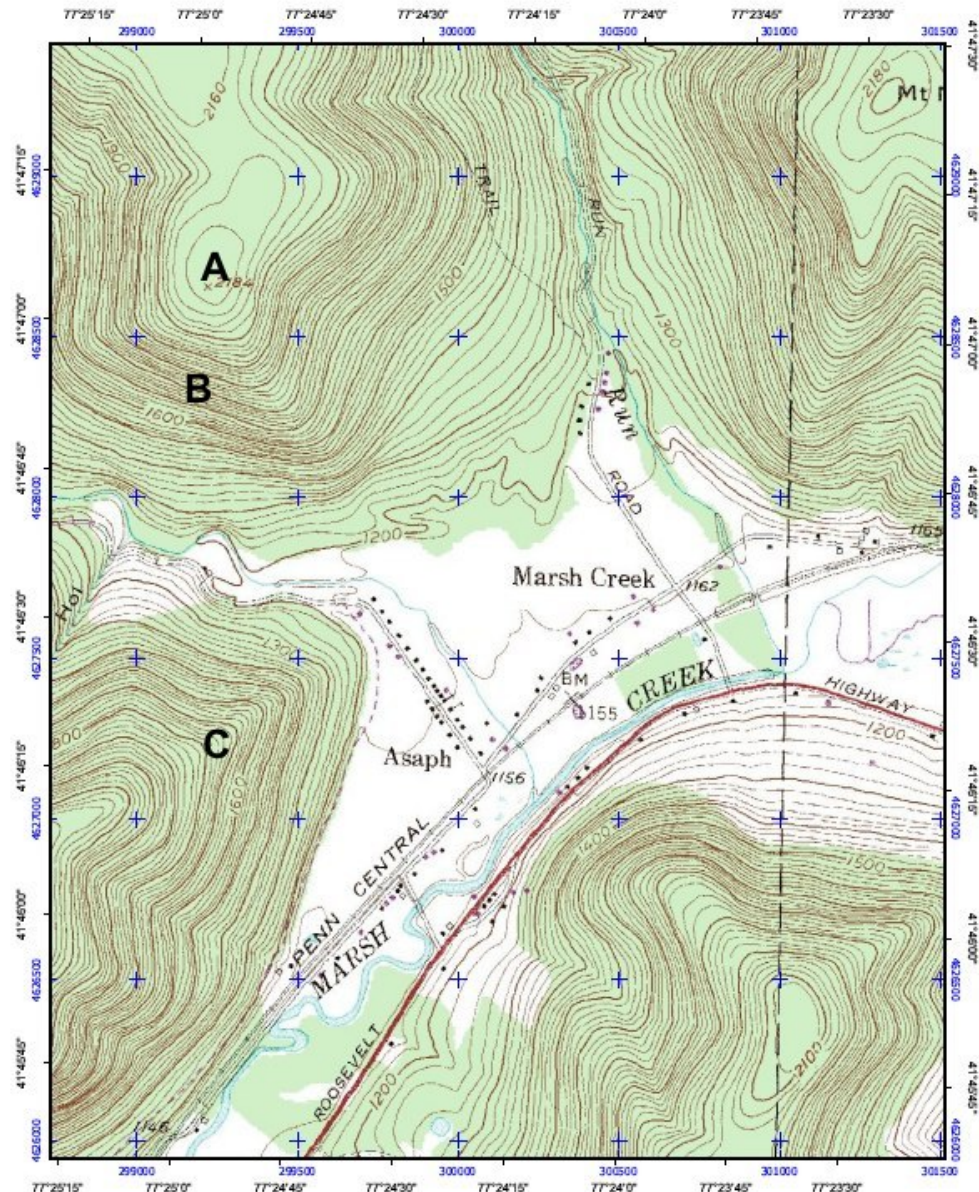


# Topo map = grav PE graph (2D)



At which point is  
the force downhill  
the strongest?

1. A
2. B
3. C

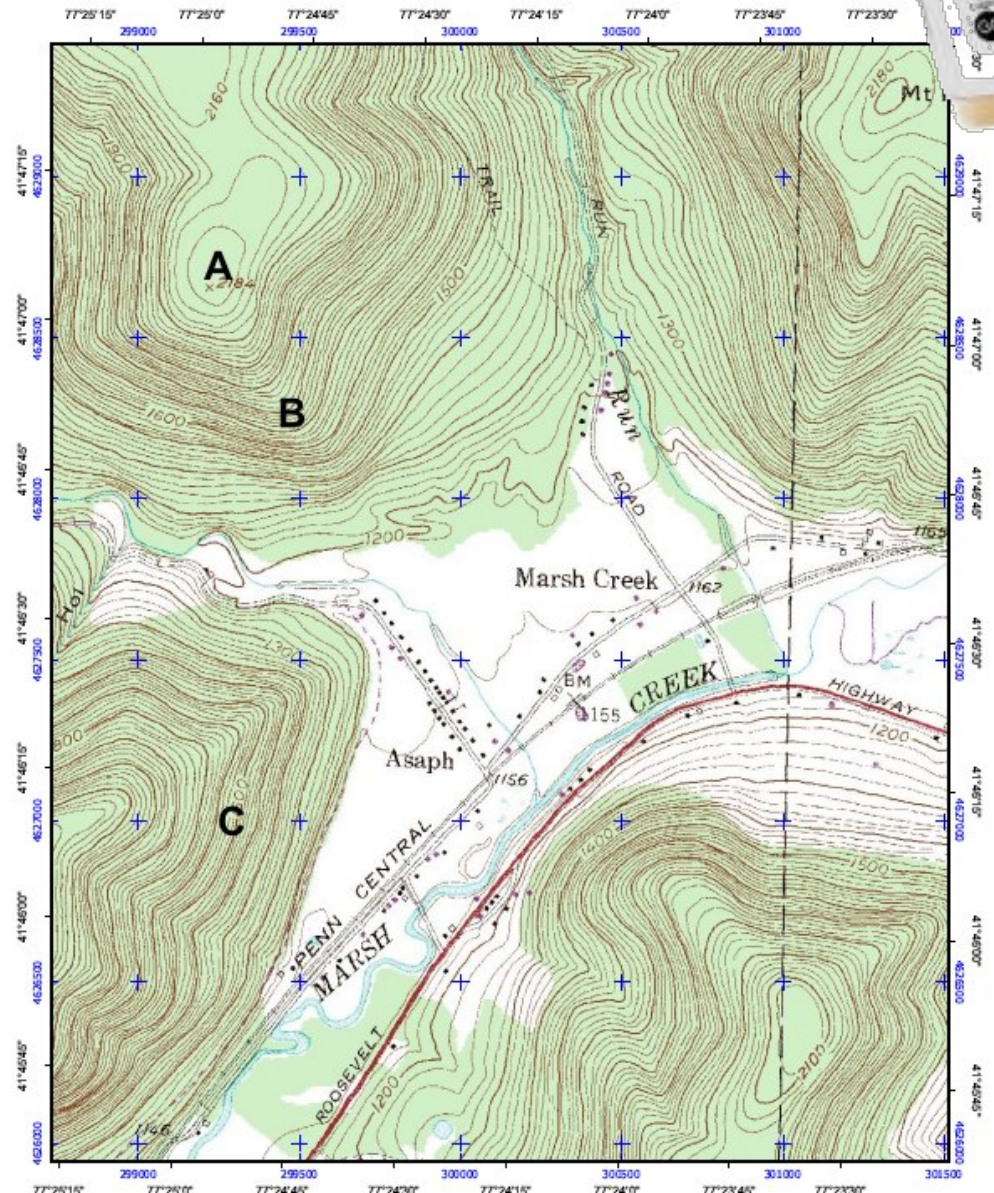




# Topo map = grav PE graph (2D)

At which point is  
the force downhill  
pointing to  
the east?  
(North is up)

1. A
2. B
3. C
4. None





# Topo map = grav PE graph (2D)

At which point is  
the force downhill  
pointing to  
the north?  
(North is up)

1. A
2. B
3. C
4. None

