

Shapes of flux domains in the intermediate state of type-I superconductors

Alan T. Dorsey*

Department of Physics, University of Florida, Gainesville, Florida 32611

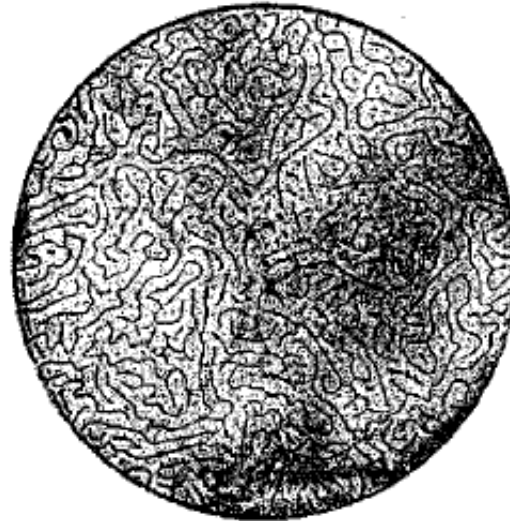


FIG. 1. Intermediate state of indium, in which superconducting regions (black) are decorated with niobium. The applied field is close to the critical field ($H_a/H_c = 0.931$). Adapted from Haenssler and Rinderer (Ref. 3).

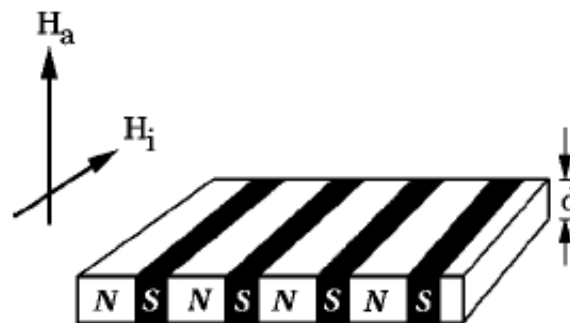


FIG. 2. Laminar state in a thin slab. The applied field H_a is normal to the slab. An ordered laminar structure is obtained with an additional in-plane component H_i .

Superconducting Nanowires

Alexey Bezryadin, U. Illinois

