

EXPERIMENTAL PROOF OF MAGNETIC FLUX QUANTIZATION IN A SUPERCONDUCTING RING*

R. Doll and M. Nābauer

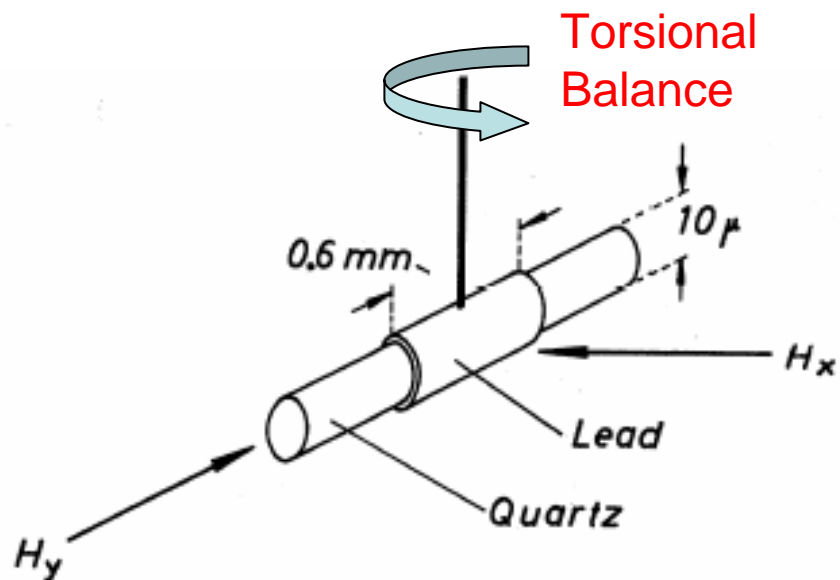


FIG. 1. Schematic diagram of the sample with the directions of the applied field H_y to be frozen in, and the measuring field H_x .

Procedure:
 $T > T_c$ Apply H_y
 Cool below T_c
 Remove H_y
 Apply H_x , measure torque

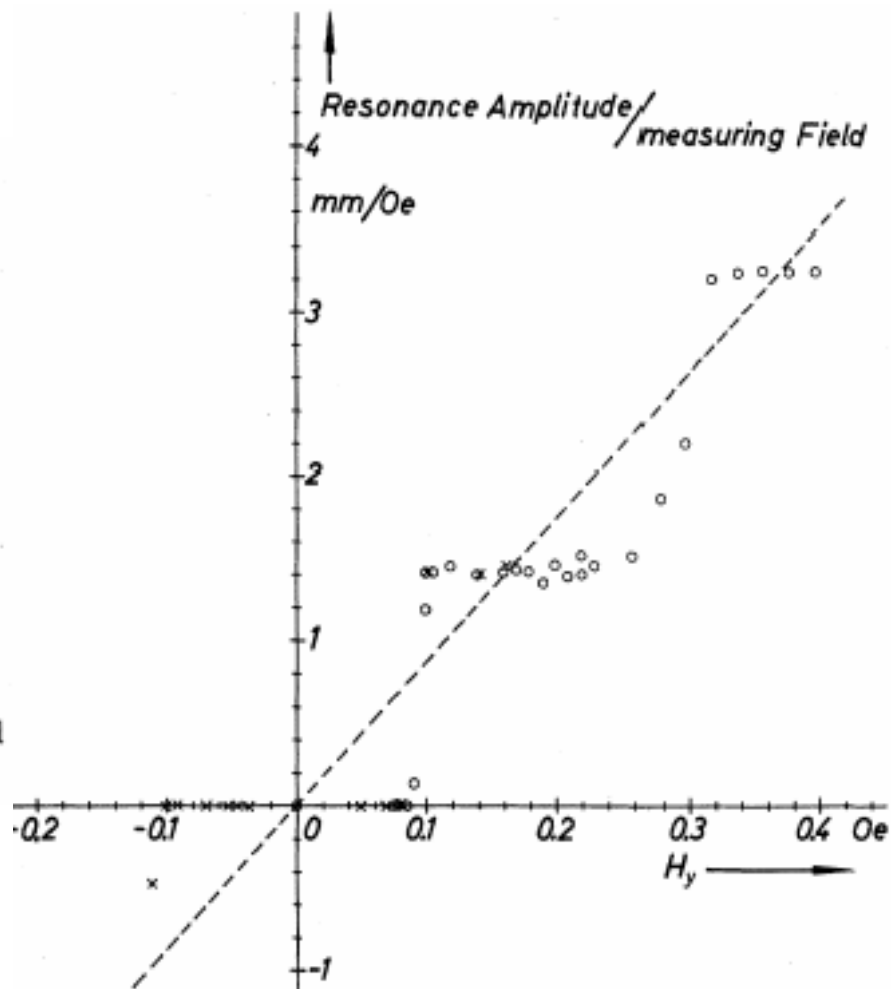


FIG. 2. Resonance amplitude divided by measuring field H_x as a function of the applied field H_y . The ordinate is proportional to the frozen-in flux. \times — First run; o — second run.