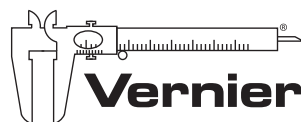


# Logger *Pro* 3<sup>®</sup>

## QUICK REFERENCE MANUAL



Measure. Analyze. Learn.™

# GETTING STARTED

---

## Logger Pro Requirements

To use *Logger Pro*, you must have the following equipment:

- ▶ Windows® 98 SE, Me, 2000, or XP with Pentium® processor, 200MHz or better, 32 MB available RAM, 60 MB of hard disk space for a minimum installation. Available USB or serial port.
- ▶ Macintosh OS® (PPC or Intel) OS X 10.3 or 10.4, built-in USB port.

Using the movie feature of *Logger Pro* will require a faster processor and more memory, such as a 1 GHz processor with 256 MB RAM. Movies are supported by QuickTime®, which you can add during *Logger Pro* installation.

**Note:** *Logger Pro cannot be used with the ULI or Serial Box interface. Contact us for the availability of earlier versions of Logger Pro for older operating systems or interfaces.*



## Load Logger Pro

### Windows

- ▶ Place the *Logger Pro* CD in the CD-ROM drive of your computer.
- ▶ If you have Autorun enabled, the installation will launch automatically; otherwise choose Settings→Control Panel from the Start menu. Double-click on Add/Remove Programs. Click on the Install button in the resulting dialog box.
- ▶ The *Logger Pro* installer will launch, and a series of dialog boxes will step you through the installation of the *Logger Pro* software. We recommend that you accept the default directory.

### Macintosh

- ▶ Place the *Logger Pro* CD in the CD-ROM drive of your computer and double-click on the CD icon.
- ▶ Double-click the “Install *Logger Pro*” icon and follow the instructions.

# Get Everything Ready

To collect data with *Logger Pro* you will need either a LabPro® or a Go!®Link, with at least one sensor, or one of several dedicated sensors listed below.



**A Vernier LabPro interface:**  
The Vernier LabPro is a multi-channel interface with its power supply and USB or serial cable



**A Go!Link interface:**  
Go!Link is a single-channel interface that connects directly to a computer's USB port.

**And**, at least one sensor:

Sensors are connected to the LabPro or Go!Link. A Stainless Steel Temperature Probe is a good choice for initial testing of *Logger Pro*. The Voltage Probe included with the LabPro interface can also be used.

► **Or, Go! Temp**



The Vernier Go!Temp is a temperature probe that connects directly to the USB port of your computer. No interface is needed. This sensor comes with the *Logger Lite* software.

► **Or, Go! Motion**



The Go!Motion is a motion detector that connects directly to a computer's USB port.

► **Or, WDSS**



The Wireless Dynamics Sensor System collects acceleration, force, and altitude data. It requires a Bluetooth-equipped computer

► **Or, Spectrometer**



The Vernier Spectrometer measures intensity and absorbance over many wavelengths simultaneously.

► **Or, Garmin GPS**



(Windows only) Select Garmin GPS units can connect to *Logger Pro* for live data collection, or the retrieval of stored tracks or waypoints.

► **Or, Ohaus Balances**



*Logger Pro* allows you to collect mass data from select models of Ohaus balances.

# Initial Setup

**Note:** The following setup instructions are for the LabPro interface. They are similar to the Go!Link interface instructions. Choose *Logger Pro 3 Help* from the *Help* menu for further details.

## Before launching *Logger Pro*, you should:

- ▶ Power the LabPro using the AC power supply or AA batteries.
- ▶ Connect a sensor to LabPro.
- ▶ Connect the USB or serial cable to LabPro.
- ▶ Attach the other end of the interface cable to any unused serial port or USB port on your computer.



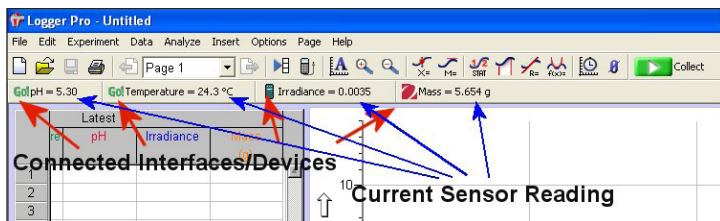
## Start *Logger Pro*

Locate the *Logger Pro*  icon and double-click on it.

Mac OS X users can find the icon in the *Logger Pro* folder created during installation.

**Note:** The first time that you run *Logger Pro* with your LabPro interface, a message may appear notifying you of an update to the LabPro operating system. **Do not interrupt this update.**

*Logger Pro* can collect data from multiple interfaces and devices. If *Logger Pro* has successfully detected these devices, you will see the device icon (see figure below). Also, if an auto-ID sensor is attached, the current sensor reading will appear below the toolbar (as shown in the figure). Some devices, such as WDSS, Spectrometers, GPS or Ohaus balances, require manual connection in *Logger Pro*. Choose *Connect Interface*→(device name) from the *Experiment* menu to connect.



In the figure above, a *Go!Link*, *Go!Temp*, LabPro and Ohaus balance are connected to the computer.

You have now successfully set up your equipment and installed *Logger Pro*. Keep reading for instructions on the various ways to collect and obtain data. You will also learn how to use *Logger Pro*'s powerful features, such as data analysis, movies, and customizing your experiments.

# TABLE OF CONTENTS

---

This guide first leads you through the basics of *Logger Pro*, including software installation procedures. You will learn how to collect data, manually enter data, and import data from Texas Instruments and Palm handhelds. From there, you will learn about the more advanced features of *Logger Pro*.

<b>Introduction</b> .....	6
---------------------------	---

<b>Tutorials</b> .....	7
------------------------	---

## **Acquiring Data**

Collect Data.....	7-8
-------------------	-----

Manually Enter Data.....	9
--------------------------	---

Import Data.....	9
------------------	---

Remote Data.....	9
------------------	---

## **Finding Your Way around *Logger Pro***

<i>Logger Pro</i> Toolbar and Pages.....	10
--	----

The Sensors Dialog.....	12
-------------------------	----

Managing Your Page and Data.....	12
----------------------------------	----

Analyze Data.....	14
-------------------	----

Printing.....	15
---------------	----

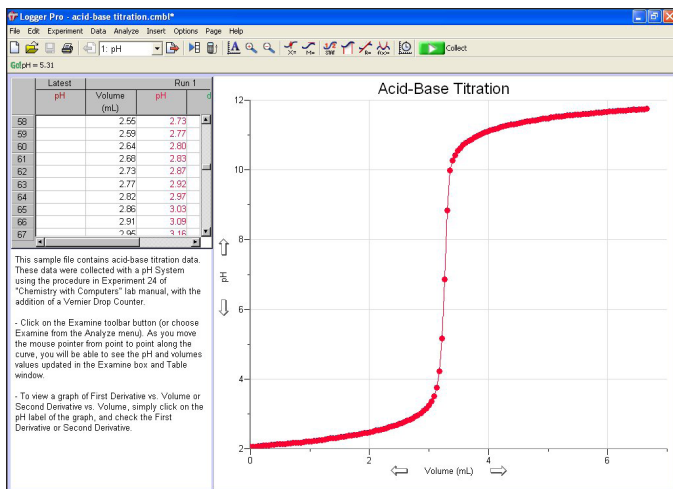
Where to Next?.....	15
---------------------	----

# INTRODUCTION

Logger *Pro* is a program that allows you to collect and analyze data from Vernier LabPro, Go!Link, Go!Temp, Go!Motion, Vernier/Ocean Optics Spectrometers, the Vernier WDSS, and Ohaus balances. Among its many features, data may be manually entered from the keyboard, pasted from the clipboard, or retrieved from a file saved on disk. Logger *Pro* is also a document creator, with the ability to include several pages in one document. With Logger *Pro* you can also:

- ▶ Perform data analysis, such as statistical analysis, curve fitting, and calculated columns.
- ▶ Add pictures to lab reports.
- ▶ Add movies and synchronize movies with data collection.
- ▶ Import data collected with TI handhelds.
- ▶ Import data collected with Palm OS® handhelds.
- ▶ Manually enter data.
- ▶ Export data to Excel® or other spreadsheets.
- ▶ Have students draw a prediction on a graph and see how well the experimental data matches it.
- ▶ Use video analysis to create a graphical representation of the motion you see in a movie.
- ▶ Use video capture to record video streaming from digital camera or webcam.

The Help guide in the program provides complete details about Logger *Pro*. Tutorials are also included. Select Open from the File menu to access them.



# TUTORIALS

---

There are tutorials that cover many Logger *Pro* features and menus. Simply choose Open from the File menu, then open the Tutorials folder:

- ▶ Getting Started
- ▶ Stats, Tangents, Integrals
- ▶ Events with Entry
- ▶ Curve Fitting
- ▶ Motion Measurement
- ▶ Linearization (Parts 1 and 2)
- ▶ Manual Data Entry
- ▶ Video Analysis

All you need to do is open the tutorial file you want to try out, and then follow the on-screen instructions in that file.

The extensive Help in Logger *Pro* provides detailed instructions for use of the program. The answer you are looking for may be just a mouse click or two away!

## ACQUIRING DATA

---

Use any of the following methods to acquire Logger *Pro* data.

### Collecting Data


Before you can collect data, you should have already performed the following steps, as outlined in the Getting Started section earlier in this booklet.

**Note:** The following setup instructions are for the LabPro interface. They are similar to the Go!Link interface instructions. Choose Logger *Pro* 3 Help from the Help menu for further details.

- ▶ Power the LabPro using the AC power supply or AA batteries.
- ▶ Install Logger *Pro*
- ▶ Connect a sensor to LabPro
- ▶ Connect LabPro to an available serial or USB port
- ▶ Start Logger *Pro*


### Configure Logger *Pro* for Your Experiment

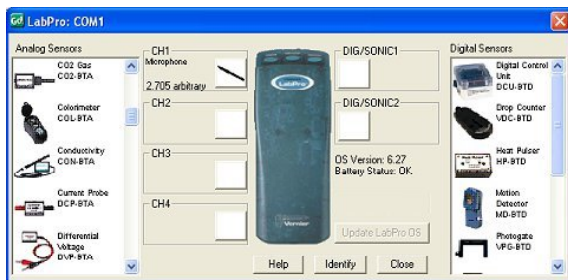
There are several ways to set up Logger *Pro* for an experiment. Most are automatic.

- ▶ **Auto-ID Sensors** With auto-ID sensors, all you need to do is connect the sensor to one of the LabPro channels and start Logger *Pro* software. The sensor will be identified, and default data-collection parameters loaded for that sensor. You are ready to click the  button and begin data collection!



▶ **Probes & sensors experiment files** If you are using an older Vernier sensor that is not auto-ID, or if you want to use some other specially configured file, you will need the Probes & Sensors folder. Choose Open from the File menu, and open the Probes & Sensor folder. There you will find a folder for each of the Vernier sensors. Open up a file with a name that best fits the data collection you want to perform.

▶ **Vernier lab book experiment files** When you choose Open from the File menu, you will see a series of folders with Vernier lab book experiment files, such as Biology with Computers, etc. Each of these folders contains 30-40 experiment files, each corresponding to an experiment in each of our lab books.

▶ **Sensor dialog** This dialog, called by clicking the respective button in the toolbar ( , for example) shows your sensor information, the units and current readings. If an auto-ID sensor is connected, Logger Pro will identify the sensors connected. Or, if your sensor is not auto-ID, you can simply drag the sensor to the appropriate channel.



## Collect Data

Click . Logger Pro will begin plotting data in the graph window. Tip: Normally, the data collection stops at the time indicated on the time axis. You can stop the data collection early by clicking . If you discover you want the data collection to go even longer, you can add additional time by choosing Extend Collection from the Experiment menu.

*Now that you have collected data, there are many things you can do with it. Keep reading for descriptions of some of the most commonly-used Logger Pro features.*

## Store Data

The Store Latest Run option in the Experiment menu saves the most recently collected data in memory, allowing you to do another collection without losing the first one.

The run labeled "Latest" always contains the most recently collected data, and is overwritten when you collect more data. When you store the latest run, a new data set named Run 1, Run 2, etc, is created and the values of the latest data set are copied to it. Columns in the latest data set are drawn with thick lines on the graph, while other columns are drawn with thin lines.

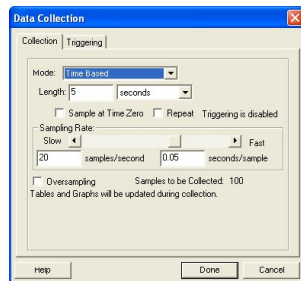
**Note:** Using Store Latest Run does not save data on disk, nor will it preserve your data between sessions or when you turn off your computer. You must select Save As from the File menu to save your session (data and analysis) to disk.



# Data Collection and Modes

You are not limited to time-based data collection. Choose Data Collection from the Experiment menu to modify data collection parameters for your experiment. See *Logger Pro's* Help for information about your choices.

**Time Based** Set the data collection rate as a function of time.



**Events With Entry** A data point is recorded whenever the Keep button is clicked. You are then prompted to enter values for a new data column.

**Selected Events** A data point is recorded whenever the Keep button is clicked.

**Digital Events** You can set data collection to run continuously (until the Stop button is clicked) or at a certain number of events.

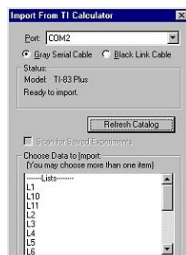
## Manually Enter Data

You can type data directly into the data table from the keyboard. To manually enter data, disconnect all interfaces, and start *Logger Pro*. Click on a cell and type in a number. You can use the mouse or the Enter/Return key to move and edit within the table. Your values will also be plotted on the graph.

Data Set	
X	Y
1	2
2	4
3	6
4	8
5	
6	

## Import Data

- ▶ You can import data from Texas Instruments graphing calculators, LabPro, or CBL 2 devices using the TI Connectivity Cable. Do so by choosing Import From→TI Device from the File menu or clicking the button. The dialog box to the right will appear with the available data lists for importing.



- ▶ Data collected and stored in the LabPro interface using its Quick Setup feature can be imported via the serial or USB cable. Do so by choosing Import From→LabPro from the File menu.

- ▶ Data collected with a Palm OS handheld running the Vernier Data Pro program can be imported by first starting up *Logger Pro*, placing the Palm OS handheld into its HotSync® cradle, and pressing the HotSync button. Data are then displayed in the table and graph of *Logger Pro*, where you can print or do further analysis.



## Remote Data

LabPro, Go!Motion and WDSS can collect data without a computer attached. You can use *Logger Pro* to set up the experiment, detach the device, collect data remotely, then reattach the device to the computer to retrieve the data. Select Remote→Setup from the Experiment menu to set up LabPro, Go!Motion or WDSS for remote data collection.

# FINDING YOUR WAY AROUND *Logger Pro*

Take a few moments to get familiar with *Logger Pro*'s layout.

## Logger *Pro* Screen and Toolbar

**Toolbar** The toolbar contains buttons for the most commonly used features of *Logger Pro*. All of the features in the toolbar are also available in the menus. As you move the pointer across a button, you are given a short description of each feature.



Click	To
	Create a new document.
	Open an existing document.
	Save the active document or template with its current name.
	Print the screen as displayed on your monitor.
	Scroll between pages.
	Bring up the previous page of the current document.
	Bring up the next page of the current document.
	Bring up the Data Browser Window.
	Import data from the Texas Instruments calculator.
	Automatically scale the graph to include all data points.
	Zoom in to the selected region of the graph.
	Zoom out by a factor of two in both x- and y-directions.
	Enter Examine mode.
	Enter Tangent Line mode.
	Integrate selected data range.
	Calculate statistics on selected data.
	Make a linear fit to the selected range.
	Perform general curve fits.
	Set data-collection parameters.
	Begin collecting data.
<i>(The following icons only appear when collecting data or if is relevant.)</i>	
	Stops collecting data or stops a replay.
	Tells the heat pulser to generate a pulse.
	Click this button to keep a data point.
	Click the Zero button to set the current value of a sensor to zero.

**Menu bar** Logger *Pro* has a menu bar across the top of the main window. Use the menu bar to access all of the software's features.

File Edit Experiment Data Analyze Insert Options Page Help

**Object** You can add new objects using the items in the Insert menu and modify them using the Options menu or by double-clicking on the objects. Some objects are listed here:

**Graph** Available graphs include Cartesian (2-D), Histogram, FFT Graph.

**Table** Displays data in data sets.

**Text** A small text editor. Use it to record notes for your file.

**Text Annotation** Allows you to enter and edit notes about the data.


**Meter** Displays the values of data columns in large digits, as a thermometer, gauge, or animated display.


**Movie** You can add a movie of an experiment to your page, then synchronize data collection to the movie.

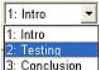
**Picture** You can add a digital picture object to your page.

## Navigate Between Pages


Logger *Pro* 3 has "pages." These pages allow you to have different layouts of data in a single file. One page might contain a graph and table with five different data collections. On different pages you might perform comparisons between different collections or just go into each collection in more detail.

Click  on the Toolbar to jump to the next page.

Click  on the Toolbar to jump to the previous page.

 You can also use the drop-down menu from the Toolbar to choose a page directly.

# The Sensors Dialog

This dialog, called up by clicking the respective button in the toolbar ( , for example) shows your sensor information, the units and current readings. The details of the dialog vary, depending on the use of LabPro, Go!Temp, Go!Link, Go!Motion, WDSS, spectrometers, GPS or Ohaus balances.



Use the scroll bars in the Sensor Catalogs to view all sensors.

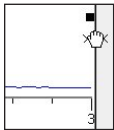
By clicking in a Channel box with a displayed sensor, you may be able to:

- ▶ **Calibrate a sensor:** Perform a new calibration.
- ▶ **Get sensor information:** Includes collection details and calibration information.
- ▶ **Zero a sensor:** Sets the current reading of a sensor to zero.
- ▶ **Choose sensor:** Select another sensor for the channel.
- ▶ **Change the current settings:** Select the available units or calibration settings
- ▶ **Analog out (CH 4 only):** This channel can be used as a function generator.
- ▶ **Remove sensor:** Clears the channel of the sensor.

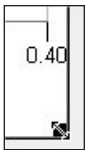
## Manage Your Page and Data

There are numerous ways that you can customize the presentation of your data.

### Manage and Adjust Objects



**Move Objects** Select the object by clicking on it once. Move the cursor over the edge of the selected object until the cursor turns into a hand, then hold down the mouse button while grabbing and moving the object.



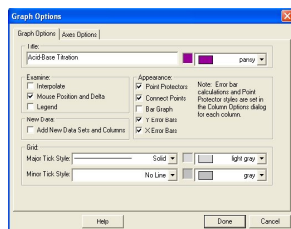
**Resize Objects** Single-click on an object to select it. When an object is selected, its border becomes visible, along with eight resizing handles.

Clicking and dragging a resize handle will resize the object in the appropriate direction.

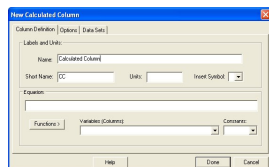
**Graph Axes** Customize your graph by changing the columns that are displayed.

1. Position the mouse over the X-axis or Y-axis label and click. A list of available columns will appear.
2. Select the column you want displayed. If you want more than one column displayed, select More and check the boxes next to the desired columns.

**Graph Options** Double-click on the graph or select Graph Options from the Options menu to call up the Graph Options dialog. This allows you to change the graph object appearance, including point protectors, legend, line style, and other graph features. Click the Axis Options Tab to adjust scaling and select what columns are plotted or add a Y axis to the right-hand side of the graph.



## Create a Column



You can create a new column that is manually entered or that consists of calculations based on other data in *Logger Pro*. Create a new column by selecting New Manual Column or New Calculated Column from the Data menu.

## Select and Edit Cells in a Data Table

Manually-entered data and data collected using the Events with Entry mode can be edited.

- ▶ To edit a single cell in a table, single-click in the cell.
- ▶ To select a single cell in a table, click and drag the selection within that cell.
- ▶ You can select entire columns by clicking on the title of the column.
- ▶ You can select an entire row of data by clicking on the row numbers.

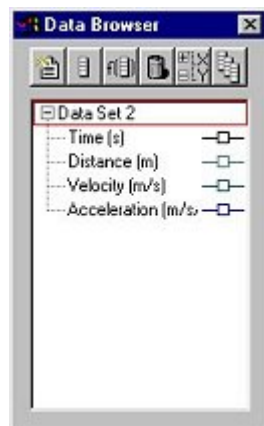
## The Data Browser

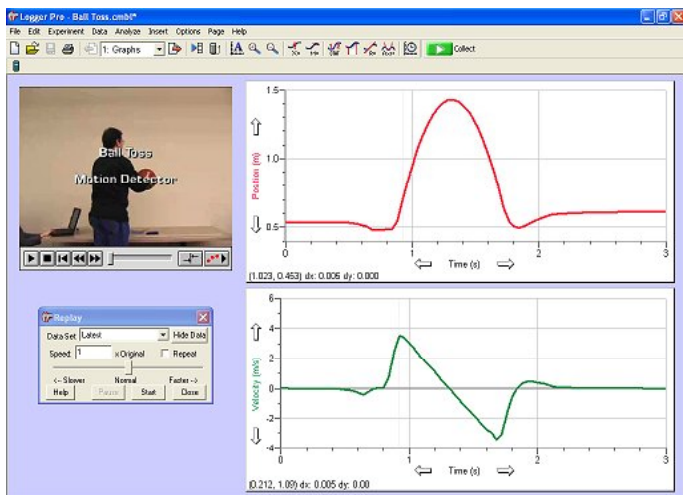
The Data Browser is a container for all data in a *Logger Pro* file. In contrast, a given Data Table will not necessarily show all data columns.

### Data Browser Features

Drag and drop from the Data Browser to objects such as tables and graphs. Drag a column to a y- or x-axis to plot it there.

When the Data Browser is selected, edit menu items like Cut, Copy, Paste, etc. will apply to the selected items within the Data Browser.





*Incorporate videos and synchronize them with data you have collected! We have included more than 40 videos, but you can easily use your own.*

## Analyze Data

The Analyze menu contains functions for examining and analyzing your data. A few of the most commonly used analysis functions include:

- ▶ **Examine:** Shows the x- and y-values of the data point closest to the mouse pointer.
- ▶ **Statistics:** Calculates the minimum, maximum, mean, and standard deviation.
- ▶ **Curve Fit:** Fits a selected or user-defined function over the data.
- ▶ **Draw Prediction:** Sketch a prediction on a graph using the mouse.

Several of the analysis features are available from the Toolbar.

## Additional Analysis Features

**Movie:** You can synchronize data collection and a movie of the experiment so that as you Replay the movie, the data are replayed on the graph.

**Video Analysis:** You can create a graphical representation of the motion you see in a movie.

**Model:** Perform a manual curve fit of your data.

**Histogram:** Displays the distribution of values for a data set in bar graph format.

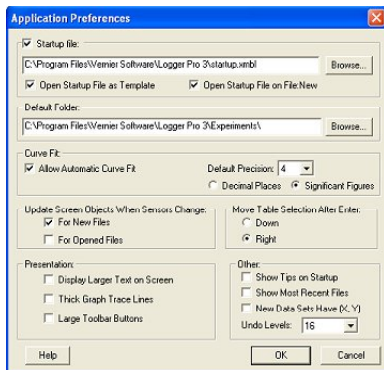
**Strip Chart:** Each new collected data point gets added to the right most edge of the graph.

**FFT:** Gives the amplitudes of the frequency components of a data series, and displays a bar graph showing the amplitudes of the frequencies shown along the x-axis.

## Set Preferences


The Preferences dialog box contains several options that pertain to the general operation of the software. These preferences will apply every time *Logger Pro* is launched.

In Windows, choose Preferences from the File menu. In Mac OS X, choose Preferences from the *Logger Pro* menu.



## Printing

Print Graphs and Data

1. Arrange the objects on the screen as you want them to appear on the paper. If you choose, you can print several graphs and data tables at once.
2. Select Print from the File menu or click  on the toolbar.
3. When the printer is ready, click  in the Print dialog box.

You can print the graphs and data tables individually by selecting Print Graph or Print Data Table from the File menu.

## Where to Next?

The extensive Help system in *Logger Pro* provides detailed instructions for these and other features.

Also available are the *Logger Pro* Tutorials. Choose Open from the File menu to access them. These short tutorials are suitable for reference or for use in your classes. First-time users should work through one introductory tutorial and the advanced tutorials as needed.

If you have questions as you are using our software, call or e-mail us. We will be happy to help!

**Vernier Software & Technology**  
13979 SW Millikan Way  
Beaverton, OR 97005-2886  
toll free 888.837.6437 | fax 503.277.2440  
[www.vernier.com](http://www.vernier.com)



## NOTES

---

---

---

---

---

---

---

---

---

---

---

---

---

---

---

---

---

---

---

---

---

---

---

Logger *Pro* 3, Go! and Vernier LabPro are registered trademarks of Vernier Software & Technology in the United States of America

Windows and Excel are registered trademarks of Microsoft Corporation.

Quicktime and the Quicktime logo are trademarks or registered trademarks of Apple Computer, Inc., and are used under license therefrom.

Macintosh and Mac OS are registered trademarks of Apple Computer, Inc.

Palm OS and HotSync are registered Trademarks of Palm, Inc.