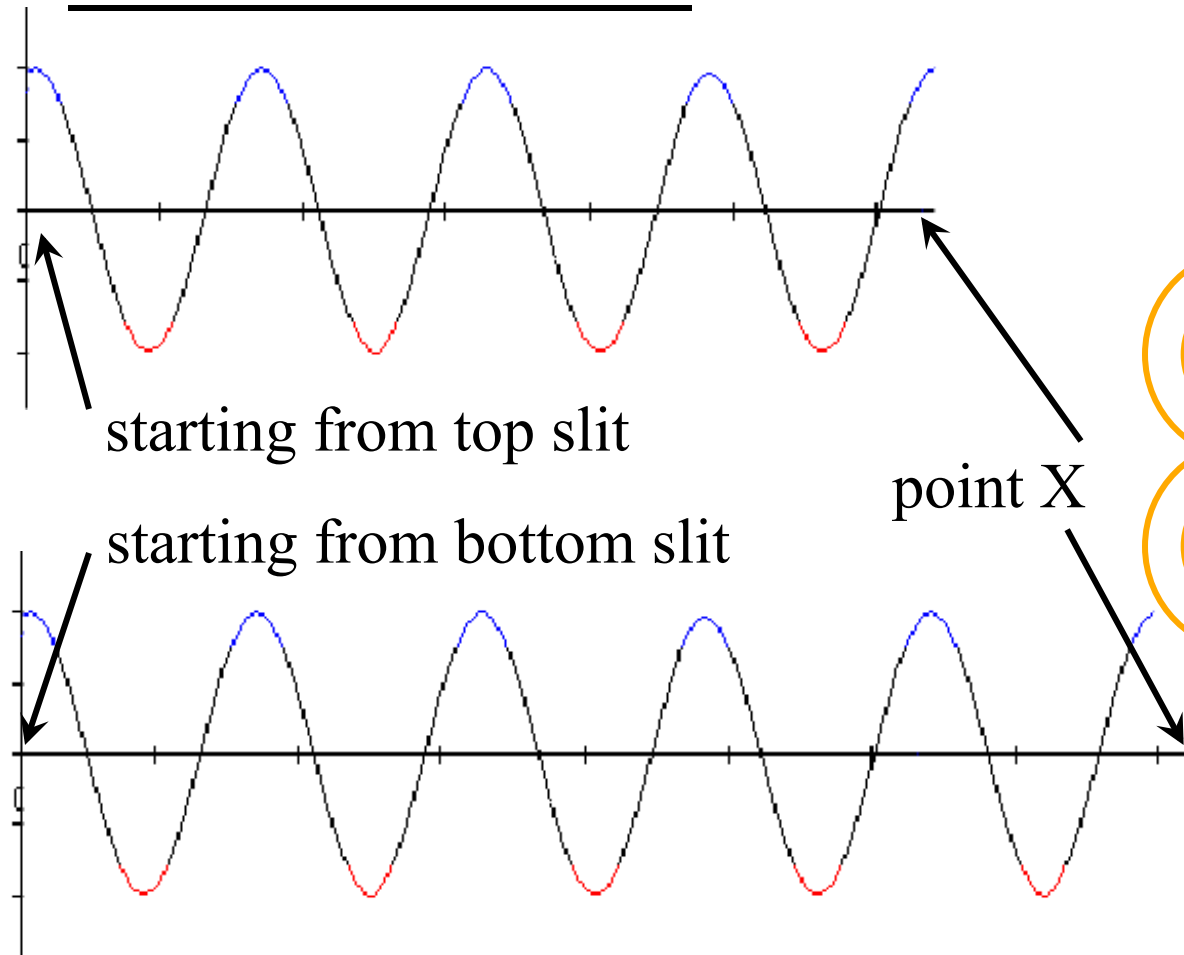




Following along path A  
at a fixed instant of time



point X  
(on screen)

path A

path B

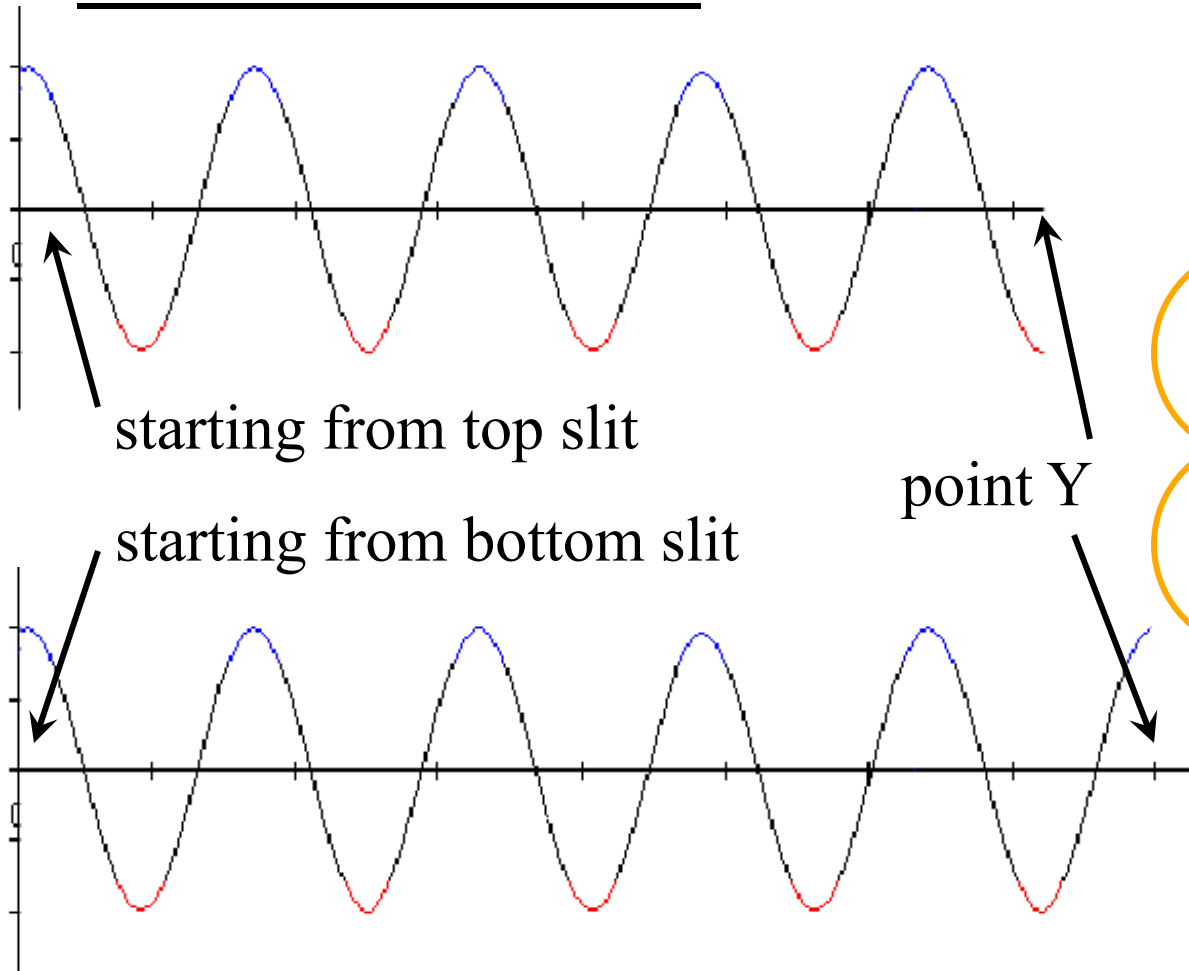
point X

Is the result  
1. a maximum,  
2. a minimum,  
3. Zero or  
4. neither?

Following along path B  
at an instant of time



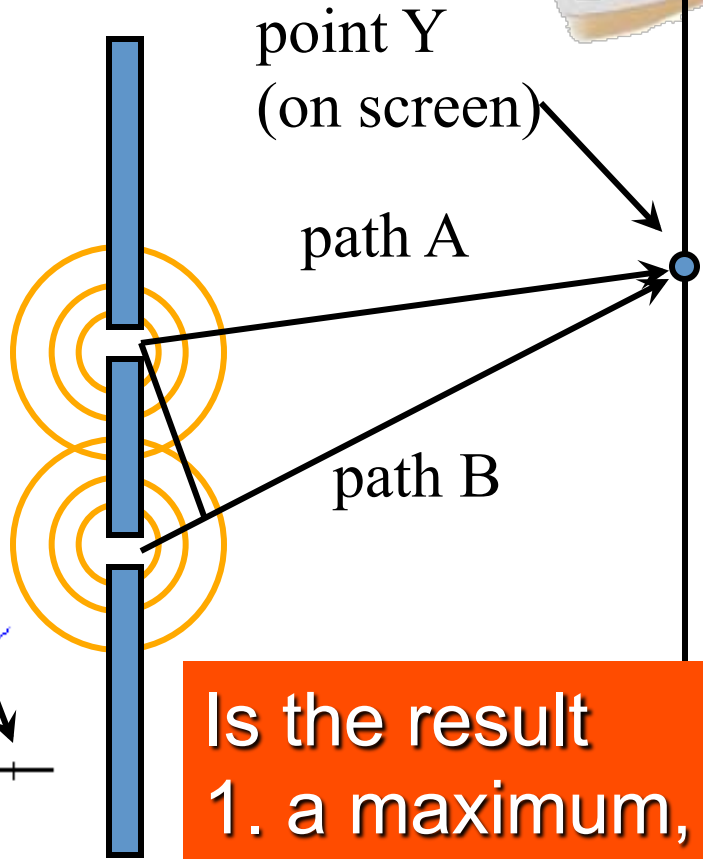
Following along path A  
at a fixed instant of time



starting from top slit

starting from bottom slit

Following along path B  
at an instant of time



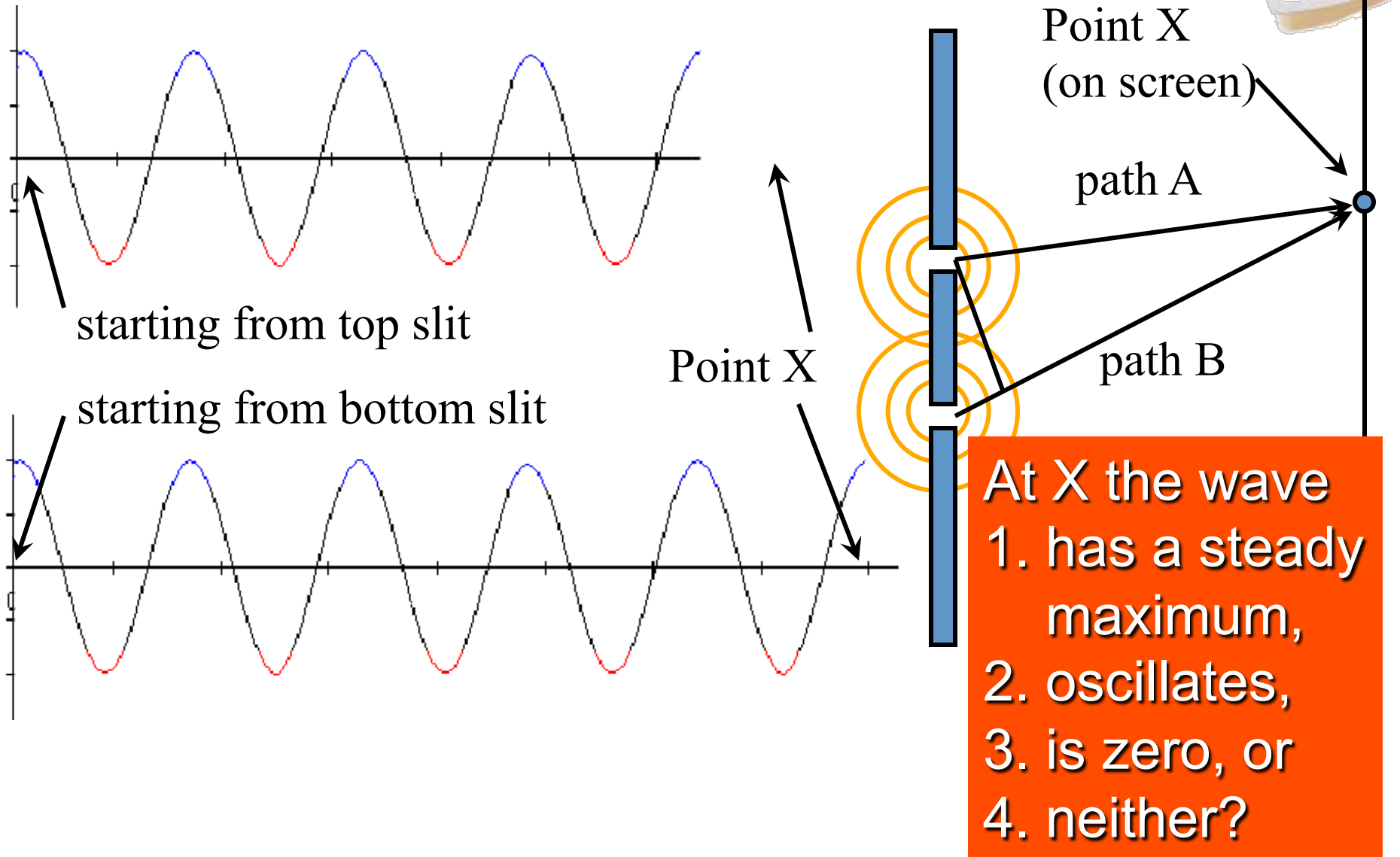
point Y  
(on screen)

path A

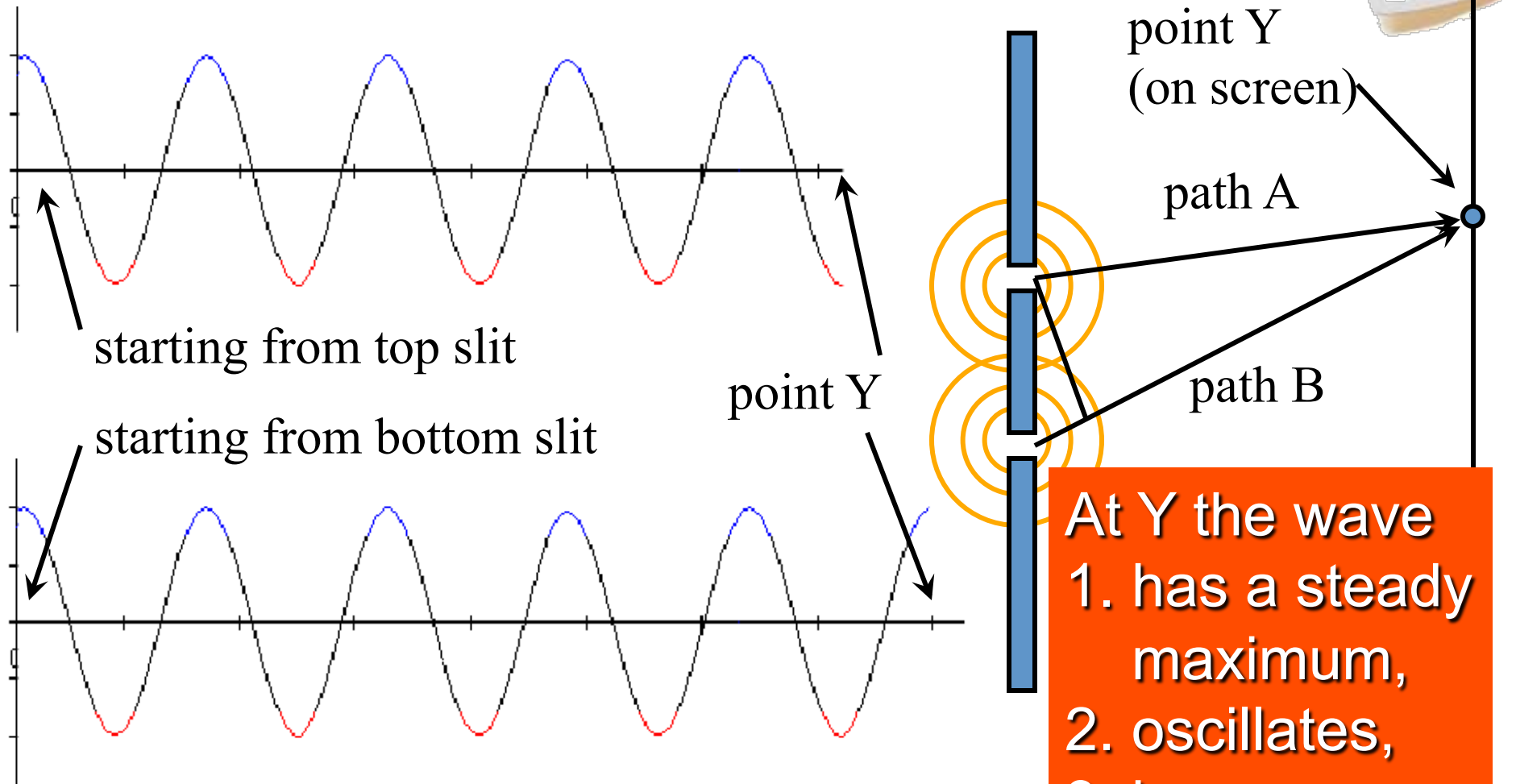
path B

Is the result  
1. a maximum,  
2. a minimum,  
3. Zero or  
4. neither?

At a LATER TIME after the time shown below



At a LATER TIME after the time shown below



At Y the wave

1. has a steady maximum,
2. oscillates,
3. is zero, or
4. neither?