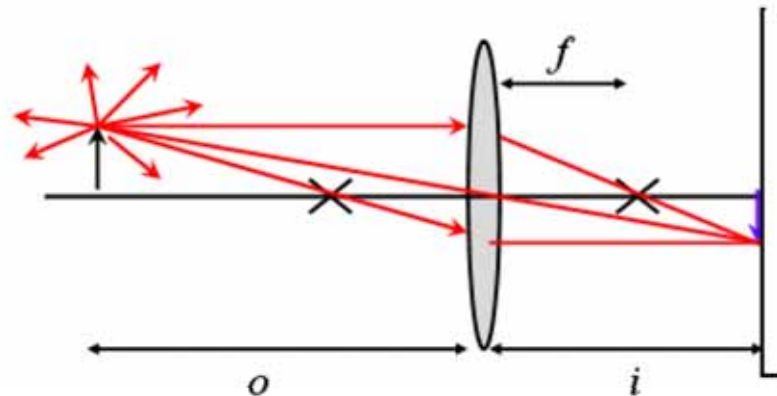




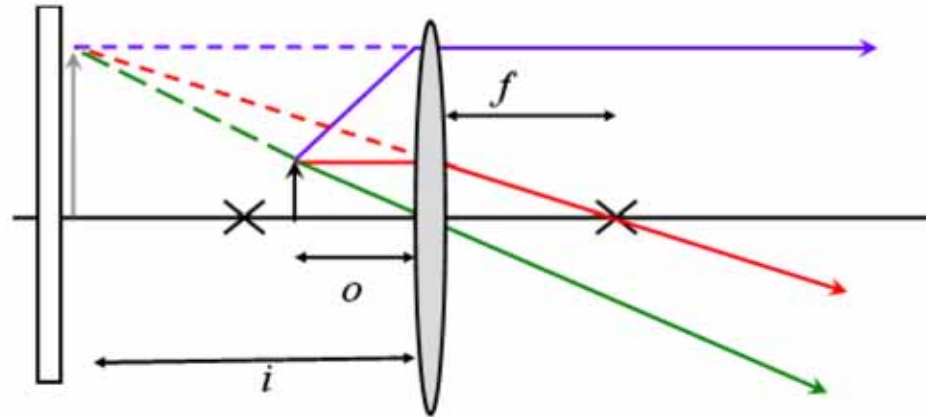
What happens if you put a screen at the image distance for a real image?



1. You won't be able to see the image from anywhere.
2. You will be able to see the image from anywhere.
3. You will be able to see the image on the screen if you are on the same side of the screen as the lens
4. You will be able to see the image only if you are lined up to see the object through the lens.



What happens if you put a screen at the image distance for a virtual image?



1. You won't be able to see the image from anywhere.
2. You will be able to see the image from anywhere.
3. You will be able to see the image on the screen if you are on the same side of the screen as the lens
4. You will be able to see the image only if you are lined up to see the object through the lens.