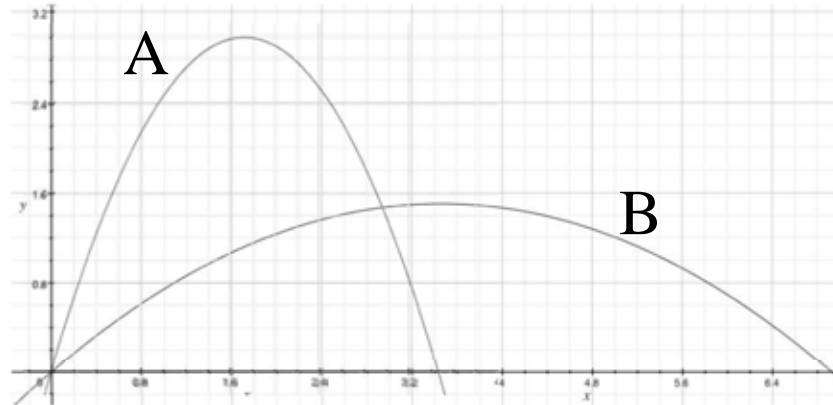


Two dense objects (so air drag can be ignored) are shot straight up at the same time from the same height. Object A is shot with a speed of 1 m/s, object B with a speed of 2 m/s. Which takes longer to come back to its starting point?



1. Object A
2. Object B
3. Both take the same.
4. I can't tell since you didn't give me the masses.
5. I can't tell for some other reason.

Two dense objects (so air drag can be ignored) are shot up at the different angles at same time from the same height. They follow the trajectories shown. Which will hit its target first??



1. Object A
2. Object B
3. Both the same.
4. I can't tell since you didn't give the masses
5. I can't tell for some other reason.